

Three Valve Manifold Remote Mount (Pipe x Pipe)

Model No. GV-111-3VMR

Features

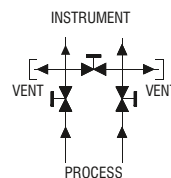
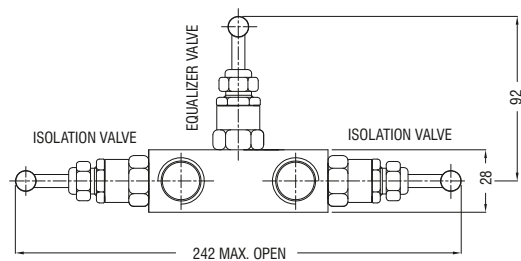
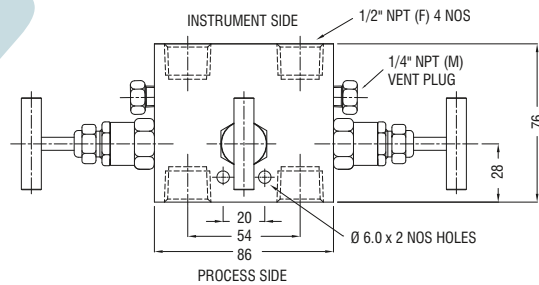
- Maximum working pressure:
6000 psi (414bar) at 100°F (38°C)
- Working temperature:
-65°F (-54°C) to 464°F (240°C)
- Packing is optional with graphite for high temperature to 450°C
- Diversity of configuration for application to differential pressure, level and transmitters.
- Optional sour gas services conforms to NACE MR0175.
- Colour caps to identify valve function.
- 100% factory tested.
- Material Traceability.
- Material: SS304L/SS316L, Monel, Hastelloy, Inconel & Duplex



Valve on three sides
with screwed connections

Description

Part No.	Part Description	Material	Qty.
01	Body	SS 316	1
02	Gland Body	SS 316	3
03	Gland Retainer	SS 304	3
04	Check Nut	SS 304	3
05	Spindle	SS 316	3
06	Gland Packing	P.T.F.E	6
07	Trim	SS 316	3
08	Dust Cap	Rubber	3
09	Handle	SS 304	3
10	Allen Bolt	SS 304	3
11	Lock Pin	SS 304	3



Note: All dimensions are subject to change without notice
All dimensions are in mm unless specified